



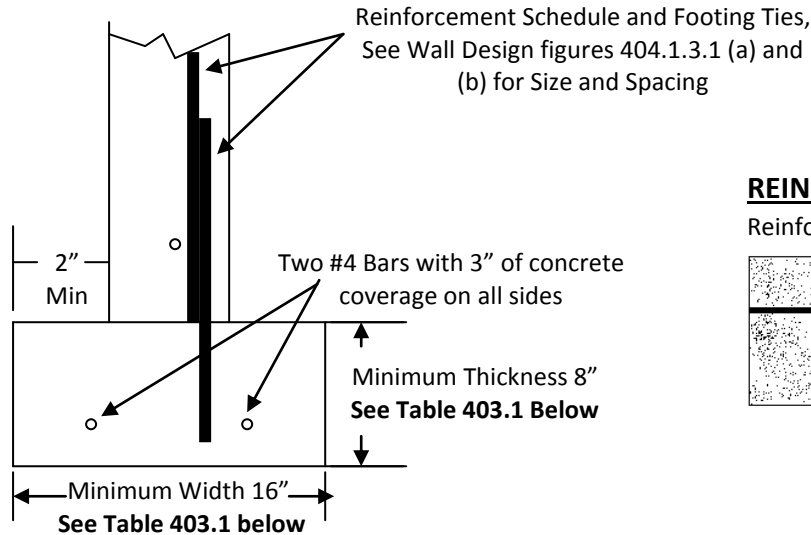
Building Guide

ILLOWA Chapter of ICC



Footing Design

!!!NOT FINISHED— DRAFT ONLY!!!



REINFORCEMENT SPLICE DETAIL

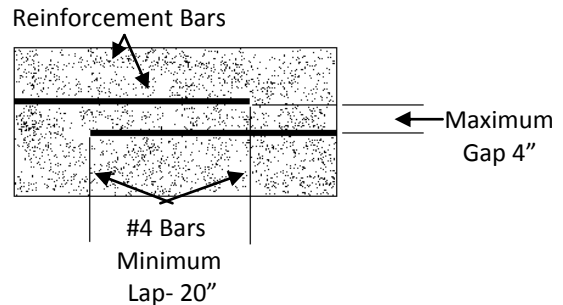
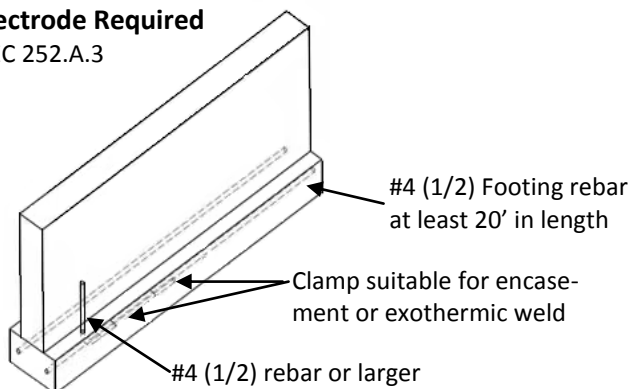


Table 403.1 As Amended Wall & Footing Design					
# Floors supported by foundation	Minimum Thickness of Foundation Walls		Minimum Footing Width	Minimum Footing Thickness	Minimum Depth Below Finished Grade
	Concrete	Masonry			
Conventional Light frame Construction					
1-Story	8"	8"	16"	8"	42"
2-Story	8"	8"	16"	8"	42"
3-Story	10"	10"	20"	10"	42"
4" Brick Veneer Over Light Frame or 8" Hollow Concrete Masonry					
1-Story	10"	10"	20"	10"	42"
2-Story	10"	10"	21"	10"	42"
3-Story	10"	10"	32"	12"	42"
8" Solid or Fully Grouted Masonry-					
Walls over 9 ft require engineering, See Figure 404.1.3.1(a)					

Concrete Encased Grounding

Electrode Required

NEC 252.A.3



Trench Footing

